

# Lungolago di Salò

↔ 1.8 km

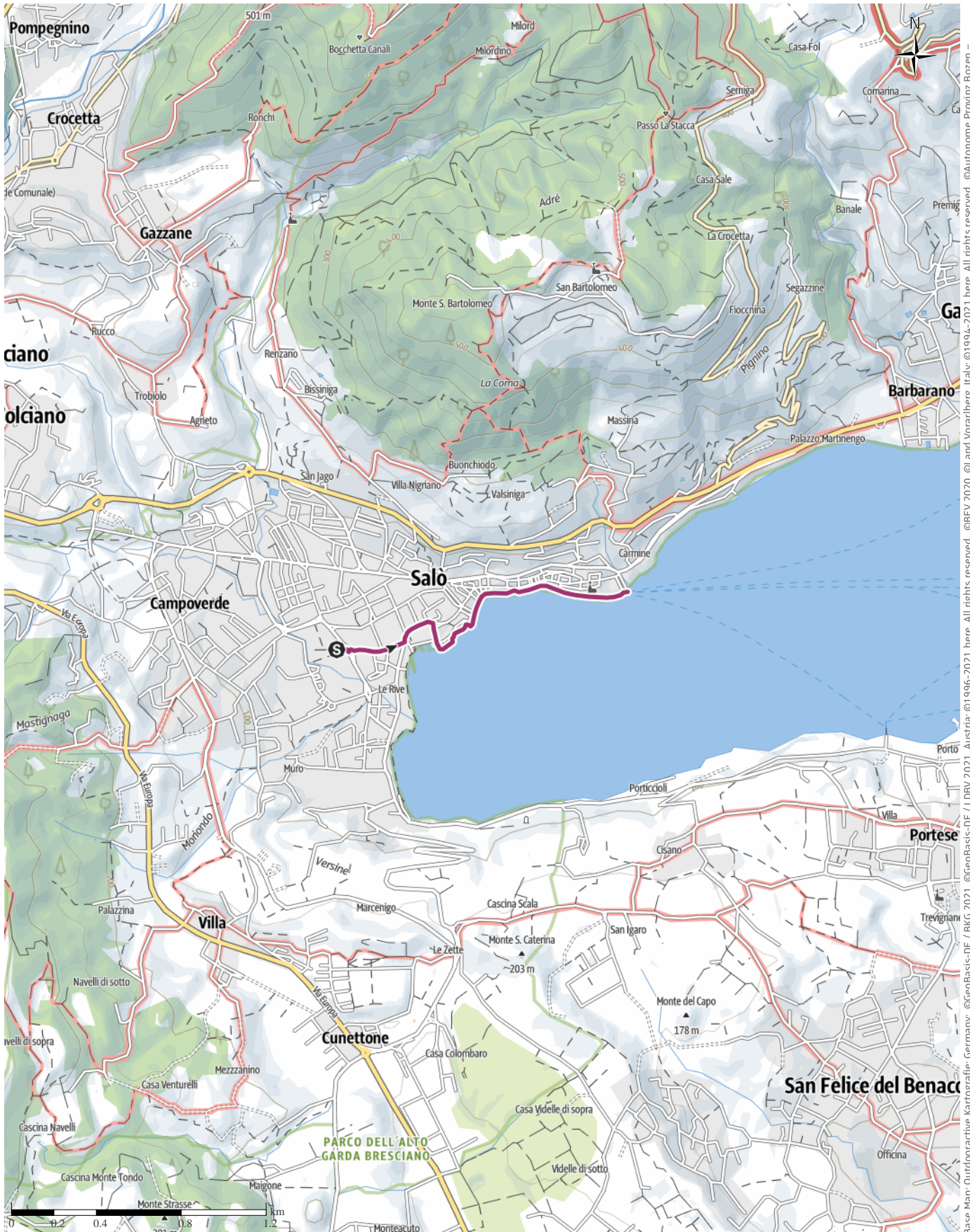
🕒 0:27 h

⬆️ 20 m

⬆️ 27 m

Difficulty

-



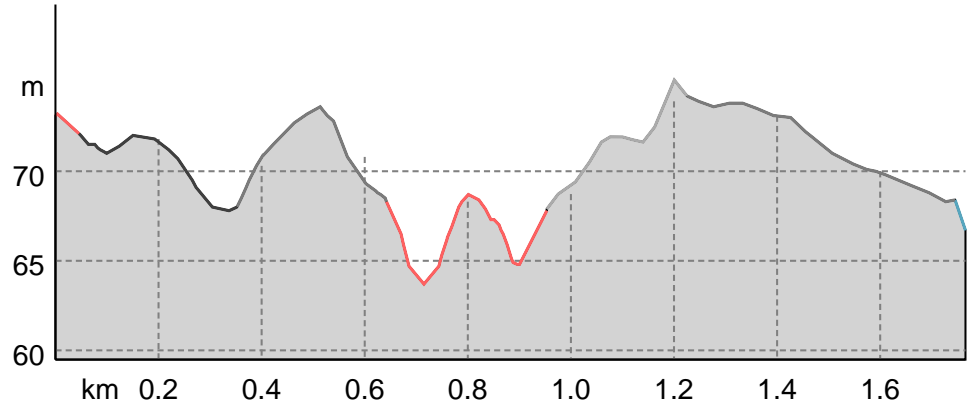
Base Map: Outdooractive Kartografie; Germany: ©GeoBasis-DE / LDBV 2021, Austria: ©1996-2021 here. All rights reserved. ©BBEV 2020, ©Land Vorarlberg, Italy: ©1994-2021 here. All rights reserved. ©Autonome Provinz Bozen - Südtirol - Abteilung Natur, Landschaft und Raumentwicklung. ©Cartago S.R.L. Base Map: outdooractive Cartography, ©OpenStreetMap (www.openstreetmap.org)

# Lungolago di Salò

## Road surface

Asphalt	0.8 km
Path	0.4 km
Street	0.3 km
Ferry	0 km
Unknown	0.3 km

## Elevation profile



## route data

### City Walking

Distance	↔	1.8 km
Duration	🕒	0:27 h
Ascent	⬆️	20 m
Descent	⬇️	27 m

Difficulty: -

Stamina: ●●●●●

Technique: ●●●●●

Altitude: 75 m / 64 m

## Best time of year

JAN | FEB | MAR  
 APR | MAY | JUN  
 JUL | AUG | SEP  
 OCT | NOV | DEC

## Ratings

Authors: ●●●●●

Experience: ●●●●●

Landscape: ●●●●●

Community: ●●●●●

## More route data

### Properties

Out and back



Camping Europa Silvella

Update: May 07, 2022

## Takeaway route for iPhone and Android



Scan QR code, save this route offline, share with friends and more...

Website

<https://out.ac/IBnGPG>